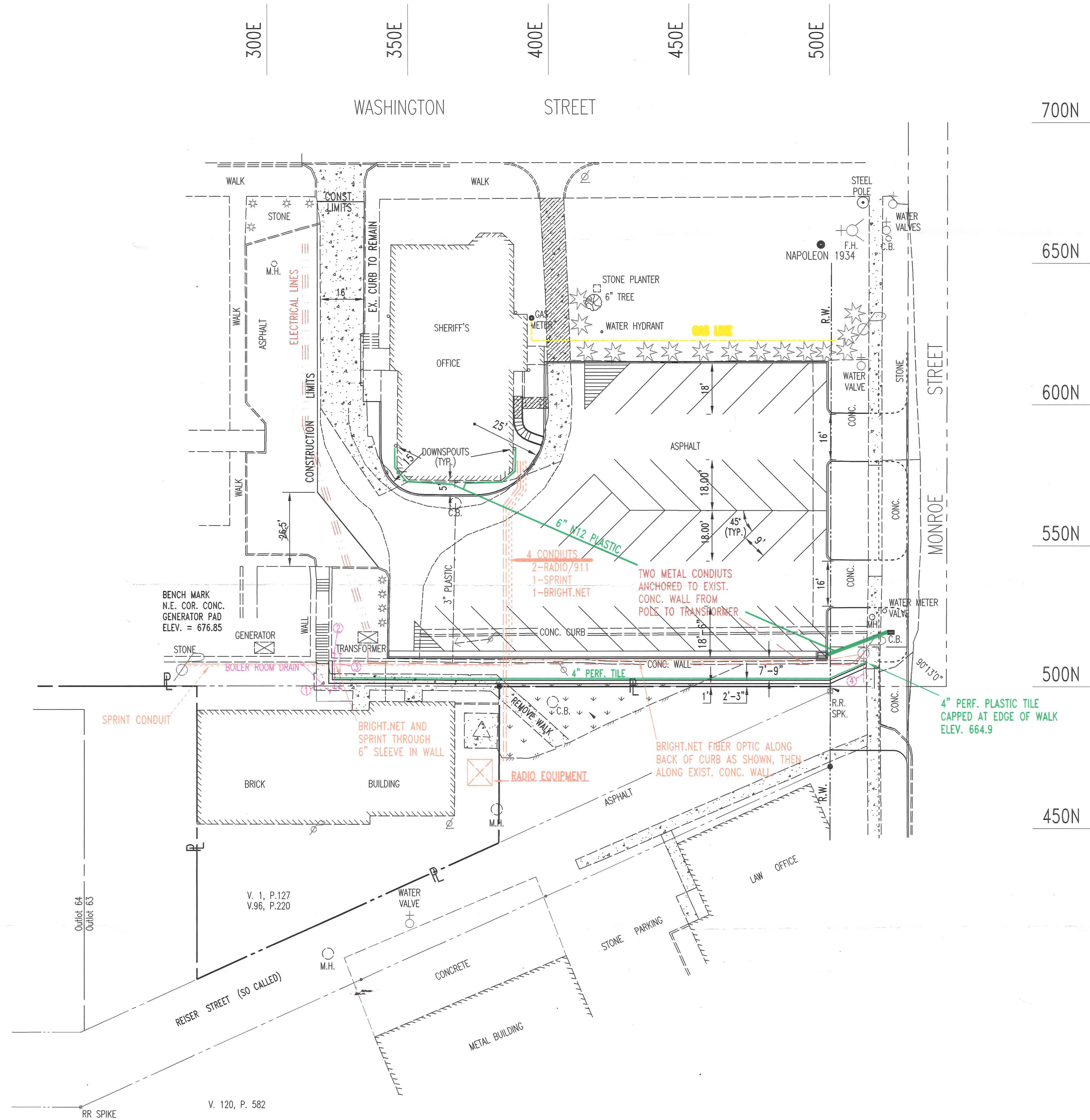


HENRY COUNTY COURTHOUSE PARKING LOT UTILITY LOCATIONS (MAY NOT BE COMPLETE)

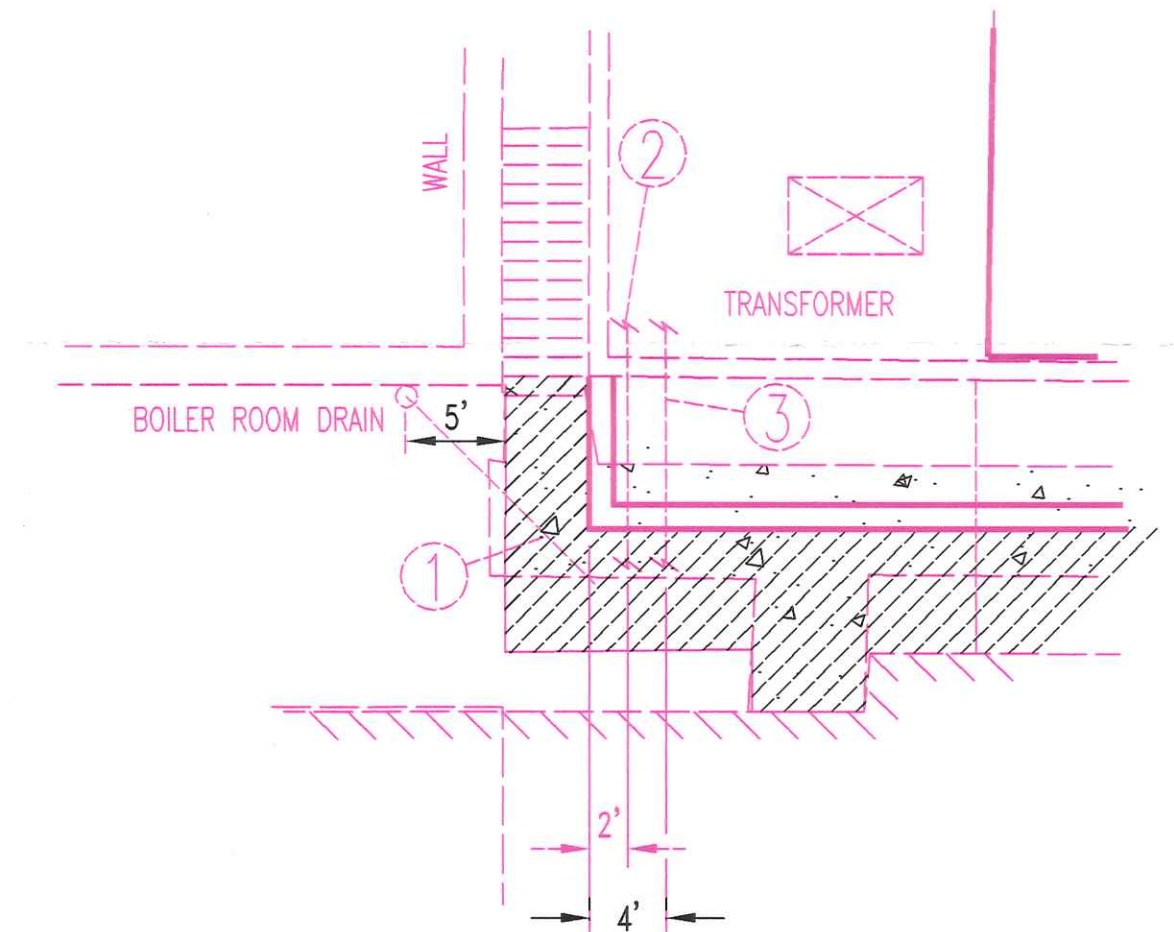
SCALE: 1" = 20'



700N
650N
600N
550N
500N
450N

PIPING UNCOVERED DURING CONSTRUCTION 9-26-03

- ① BOILER ROOM DRAIN TAPPED INTO CLAY TILE RUNNING AT AN ANGLE. BROKE & REPAIRED ANGLED CLAY TILE NEAR LEADER LINE. APPROX. ELEV. = 663.9
- ② BROKE & REPAIRED TILE W/10 L.F.-6" RIGID PLAST. (BETWEEN OLD & PROP. WALLS) TILE RUNS N. & S., 2' EAST OF PROP. WALL @ S.W. COR. APPROX. ELEV. = 662.8 TO T/PIPE
- ③ BROKE & REPAIRED SANITARY TILE W/8 1/4 L.F.-8" RIGID PLAST. (BETWEEN OLD & PROP. WALLS) TILE RUNS N. & S., 4' EAST OF PROP. WALL @ S.W. COR. APPROX. ELEV. = 661.4 TO T/PIPE
- ④ BROKE & REPAIRED 10" VIT. TILE RUNNING N. & S. REPAIR WAS 6' S. OF P/POLE. @ S.E. QUAD. 10" VIT. RUNS N. & S. DIRECTLY THRU P/POLE APPROX. ELEV. = 661.7



Waco M. Perry
PREPARED BY:

HENRY COUNTY ENGINEER
NAPOLEON, OHIO